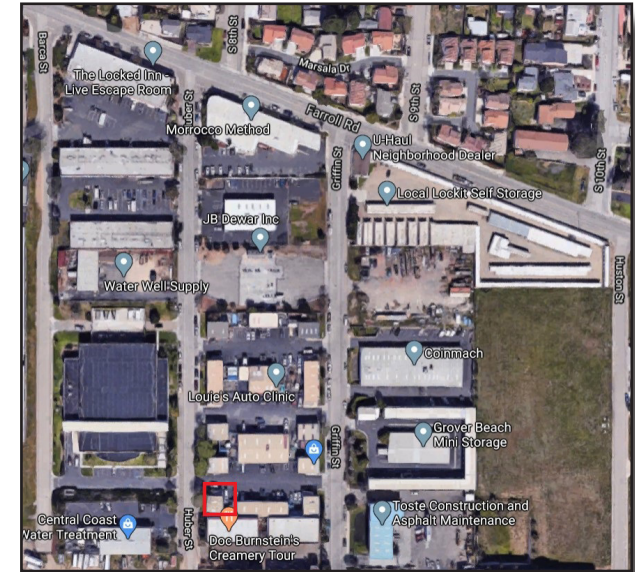


FOR LEASE Commercial Kitchen in Cannabis Zone



967 Huber Street | Grover Beach, CA 93433

Industrial condo built-out as commercial kitchen plus upstairs mezzanine office space. Includes small fenced parking area.



Property Information	
Lease Price	\$6,500/Mo. Gross
Term	Negotiable
Size	±2,500 SF
Zoning	Industrial
APN	060-547-024
Contact City regarding cannabis uses	

Jerry Schmidt
805.928.2800 ext. 107
Jerry@PacificaCRE.com
Lic #00956042
2520 Professional Parkway | Santa Maria, CA 93455 |

Pat Palangi
805.928.2800 ext. 105
Pat@PacificaCRE.com
Lic #01108680
2520 Professional Parkway | Santa Maria, CA 93455 |

Mike Kelly
805.928.2800 ext. 113
Mike@PacificaCRE.com
Lic #01800988
2520 Professional Parkway | Santa Maria, CA 93455 |



FOR LEASE 967 Huber Street, Grover Beach, CA



Jerry Schmidt
805.928.2800 ext. 107
Jerry@PacificaCRE.com
Lic #00956042

Pat Palangi
805.928.2800 ext. 105
Pat@PacificaCRE.com
Lic #01108680

Mike Kelly
805.928.2800 ext. 113
Mike@PacificaCRE.com
Lic #01800988

2520 Professional Parkway | Santa Maria, CA 93455 | PacificaSantaMaria.com



Information contained herein has been obtained from the owner of the property or from other sources deemed reliable. We have no reason to doubt its accuracy, but we do not guarantee it.